



Effective in load inspection of containers and trucks in harbours, roads and customs.

SPECTRUM**CARGO** was designed to meet the highest requirements. With multiple security solutions, the system automatically avoids the cab inspection, allowing the driver to conduct the vehicle through the inspection bridge.

Smuggling, illegal products and taxes evasion can be easily recognized by the system. Provides dynamic inspection, guaranteeing a high volume of load survey with high reliability in the analysis.



## TECHNICAL SPECIFICATIONS

### GENERAL SPECIFICATION

- Speed..... 3km/h ~ 15km/h
- Maximum vehicle size ..... 2,8m (W); 4,6m (H); Length: No limit
- Inspection method ..... Scanning through a single pass of the vehicle driven by the driver through the manhole
- Inspection Flow ..... Up to 150 vehicles per hour (vehicle with a 25m container)
- Steel Penetration ..... 300mm
- Beam energy ..... 6Mev (Single energy)  
6/4Mev (Dual energy)
- Area of radioprotection ..... Width: 15m; Length: 30m
- Maximum dose absorbed by the driver .....  $\leq 0,1\mu\text{Sv}$  / inspection
- Maximum dose for the operator .....  $\leq 1\text{mSv}$  / year

### STANDARD FEATURES

- Automatic colorization for identification of organic, inorganic and mixed materials.
- Image auto save
- Zoom higher than 64x
- Colored or black/white image
- Edge enhancement
- High penetration function
- Sharpness
- Image Export BMP, JPG, VMI
- Network connection
- Scanning in real time
- Self diagnostic system
- Storage capacity above 50,000 images (expandable)
- Suspicious image tagging feature and image analysis report record



### SECURITY

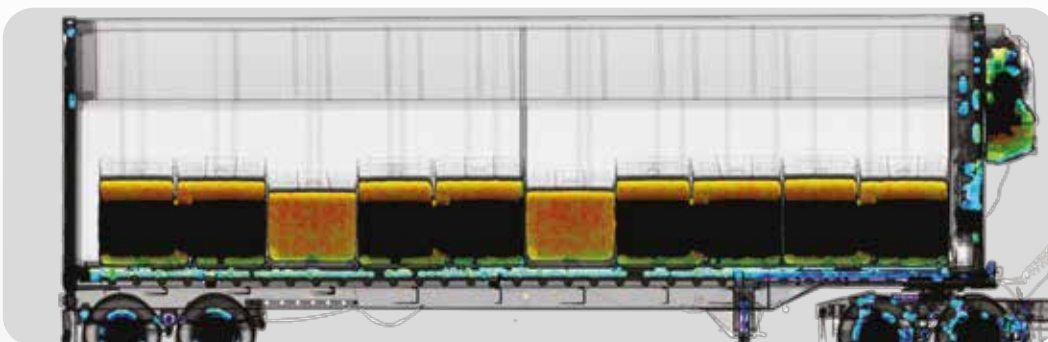
- Redundant sensors identify the driver's cabin automatically.
- Electronic barrier for traffic control
- Traffic lights for automatic traffic control
- Video monitoring system with digital video recorder
- Radio communication system

### GENERAL INFORMATION

- Operating Temperature .....  $-20^{\circ}\text{C} \sim +50^{\circ}\text{C}$  ( $-30^{\circ}\text{C} \sim +50^{\circ}\text{C}$  optional)
- Storage Temperature .....  $-30^{\circ}\text{C} \sim +55^{\circ}\text{C}$
- Humidity ..... 0%~99% (non-condensing)
- Power Supply ..... 380Vac +/-10%, three-phase + earth, 50/60Hz +/-1 (voltage can be configured according to customer need)
- Power Consumption .....  $\leq 30\text{kW}$

### OPTIONAL FUNCTIONS

- Automatic optic character recognition (OCR) of number plates and containers.
- Radioactivity monitor
- Extra image analysis station
- Image storage
- Power supply stabilizer
- UPS for the entire system energy supply



"Technical Specifications subject to change without notice."



#### VMI Security Systems

Av. Hum, 55 - Distrito Industrial Genesco Aparecido de Oliveira  
Lagoa Santa / MG - Brasil - CEP 33400-000

Fone: +55 (31) 3622-0470 / 3622-0124

contato@vmis.com.br

**X-RAY SCANNERS**  
**ELECTRONIC SECURITY**